

Circulate to: Sales Manager Accounting Service Manager Technician Parts Manager

Updating the Sweeper Headers

Models Affected

Engine	Serial Number Range
HP525 EFI	0M956572 and below
HP600 SCI, HP662 SCI, HP700 SCI	0M962885 and below

Situation

The older style headers with the header by-pass hoses are no longer available. Replacement headers and tailpipes have a different configuration requiring some new fittings to complete the update.

Correction

The part list is a guide to ordering parts that match your requirements. When replacing one header: the opposite header must be modified to eliminate the by-pass hose and the fittings on the tailpipes must be changed. When replacing a tailpipe: both headers and the opposite tailpipe must be modified to eliminate both by-pass hoses.

When replacing just the header:

Qty.	Description	Part Number
1	Starboard header	8M025930
1	Port header	8M025931
1	Bushing/Reducer for the header not being replaced	22-8M0022059
2	Plug to replace the restrictor threaded into the bottom fitting on each tailpipe	22-32803
1	Restrictor to replace the restrictor threaded into the top fitting on starboard tailpipe	22-842453406

When replacing just the tailpipe:

Qty.	Description	Part Number
1	Tailpipe with discharge passage for intercooler	8M0037870
1	Tailpipe without discharge passage for intercooler	8M0037861
2	Bushing/Reducer to replace elbow for by-pass hose on the headers	22-8M0022059
1	Plug to replace the restrictor threaded into the bottom fitting of the tailpipe not being replaced	22-32803
1	Restrictor to replace the restrictor threaded into the top fitting on starboard tailpipe	22-842453406

Header Replacement

1. Remove the hose adaptor (elbow) fitting and the by-pass hose from the header that is not being replaced.
2. Install the bushing/reducer.
3. Remove the plug from the hose adaptor and screw it into the bushing reducer.

THE INFORMATION IN THIS DOCUMENT IS CONFIDENTIAL AND PROTECTED BY COPYRIGHT AND IS THE PROPERTY OF MERCURY MARINE.

This document is provided for the sole and exclusive use of the original recipient as prescribed by Mercury Marine and may not be distributed or copied, digitally or otherwise, without the prior written consent of Mercury Marine.

IMPORTANT: Both tailpipes must have a 0.406 in. (13/32 in.) restrictor installed in the top fitting.

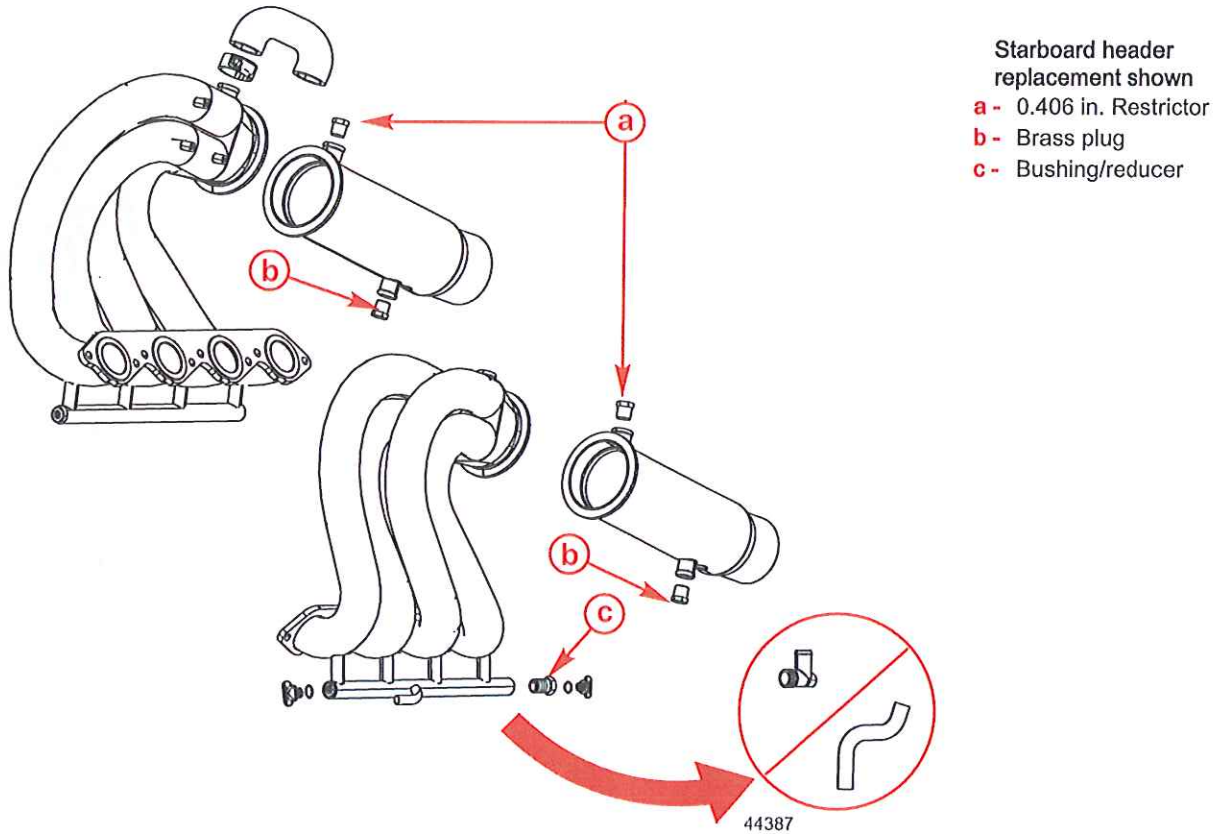
4. Install a 0.406 in. restrictor in the top fitting of the starboard tailpipe.
5. Install a brass plug in each of the lower tailpipe fittings

Tailpipe Replacement

1. Install a brass plug in the lower tailpipe fitting of the tailpipe that is not being replaced.
2. Install a 0.406 in. restrictor in the top fitting of the starboard tailpipe.

IMPORTANT: Both tailpipes must have a 0.406 in. (13/32 in.) restrictor installed in the top fitting.

3. Remove the hose adaptor (elbow) fittings and the by-pass hose from each header.
4. Install the bushing/reducer and plug in place of the hose adaptor.



THE INFORMATION IN THIS DOCUMENT IS CONFIDENTIAL AND PROTECTED BY COPYRIGHT AND IS THE PROPERTY OF MERCURY MARINE.

This document is provided for the sole and exclusive use of the original recipient as prescribed by Mercury Marine and may not be distributed or copied, digitally or otherwise, without the prior written consent of Mercury Marine.