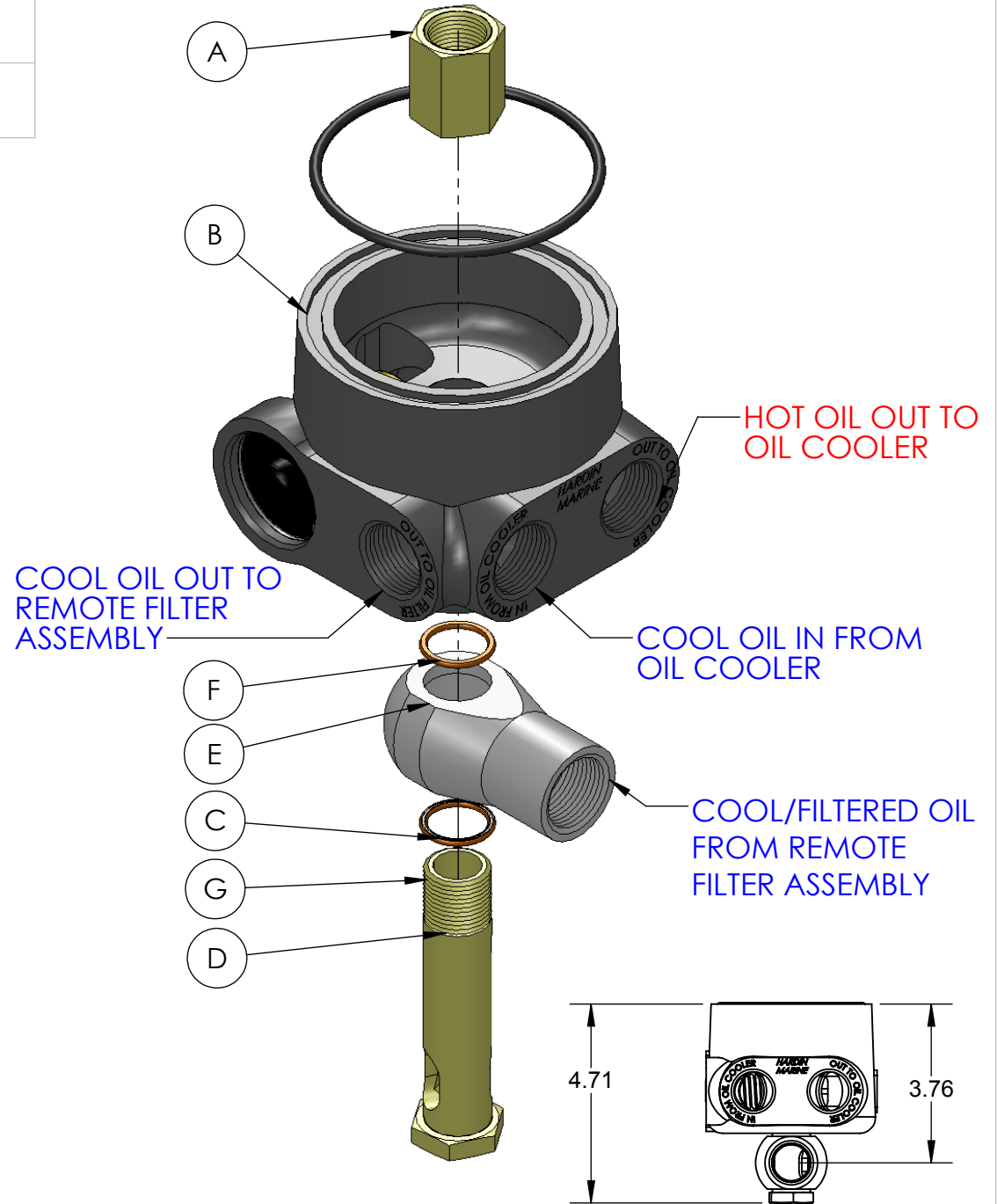


TITLE: THERMOSTATIC OIL ADAPTER -
GEN 5/6 INSTALLATION

INSTALLATION INSTRUCTIONS:

- 1) APPLY BLUE LOCTITE TO THREADS AND THREAD FIG. A CONNECTOR ON TO THE MALE FACTORY OIL FILTER NIPPLE.
- 2) APPLY GREASE TO THE O-RING AND PLACE IN RECESSED GROOVE IN CAST ALUMINUM OIL ADAPTOR FIG B.
- 3) SLIDE BOTTOM CRUSH WASHER, FIG. C, WITH THE SEAM IN THE WASHER TOWARDS THE STAINLESS STEEL OIL INLET FITTING, FIG. E.
- 4) SLIDE POLISHED STAINLESS STEEL OIL INLET, FIG. E, OVER THE OIL INLET CONNECTING BOLT, FIG. D.
- 5) SLIDE UPER CRUSH WASHER, FIG F, ON TO THE OIL INLET BOLT. PUT THE SIDE WITH THE SEAM TOWARDS POLISHED STAINLESS STEEL OIL INLET FITTING, FIG. E.
- 6) SLIDE THE OIL INLET MOUNTING BOLT & POLISHED STAINLESS STEEL OIL INLET INTO THE CAST ALUMINUM OIL THERMOSTAT HOUSING.
- 7) APPLY BLUE LOCTITE TO THE THREADS OF THE OIL INLET MOUNTING BOLT, FIG. G.
- 8) TIGHTEN OIL INLET BOLT INTO THE CONNECTOR, FIG. A.
- 9) ROTATE OIL INLET TO POSITION THAT BEST SUITS THE OIL LINE ROUTING. TORQUE TO 35 FT. LBS..
- 10) ALL IN AND OUT PORTS ARE 3/4 NPT. SEE OIL LINE DIRECTION NOTES.

THIS ASSEMBLY USES 625-7706 SERVICE KIT

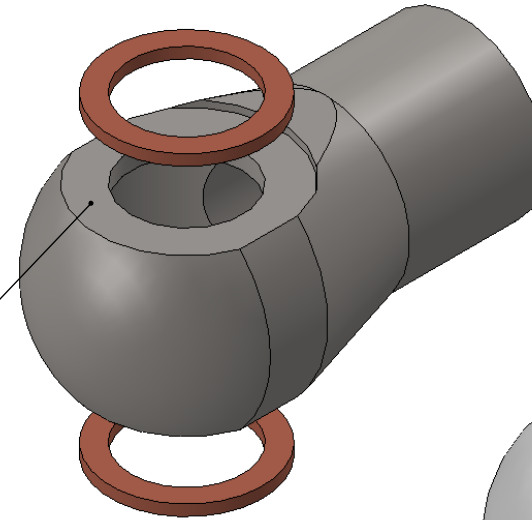


HARDIN MARINE 11 Industry Dr. Palm Coast, FL 32137
386-445-2500 / FAX 386-445-1122

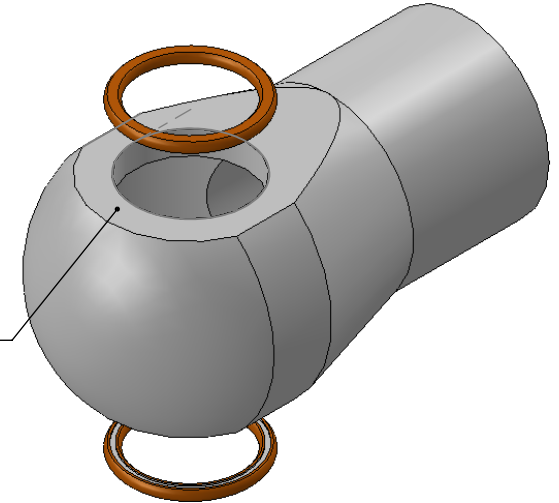
PART NO.
625-7704

TITLE: THERMOSTAT OIL ADAPTER - REVISION
CHANGED

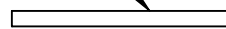
GENERATION 1
OIL INLET HAD UNDERCUT.



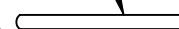
GENERATION 2
NO UNDERCUT



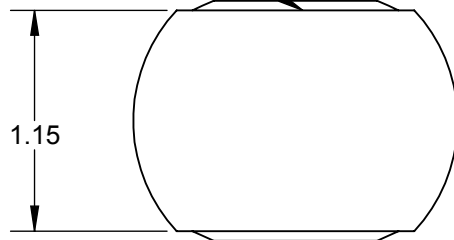
GENERATION 1
CRUSH WASHER WAS THICK
WITH SQUARE EDGES.



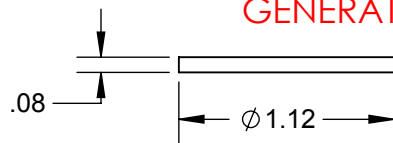
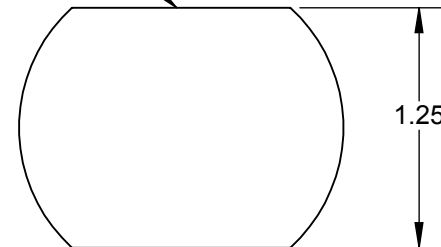
GENERATION 2
CRUSH WASHER WAS THINNER
WITH ROUNDED EDGES.



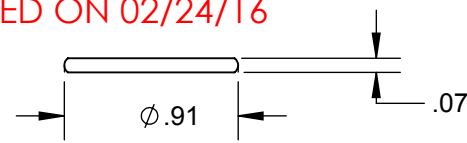
GENERATION 1
OIL INLET HAD UNDERCUT.



GENERATION 2
NO UNDERCUT



GENERATION 2 CHANGED STARTED ON 02/24/16



TITLE: **THERMOSTATIC OIL FILTER ADAPTER - MARK 4
INSTALLATION**

INSTALLATION INSTRUCTIONS:

- 1) INSTALL THE PROVIDED O-RING WITH A LIGHT COAT OF GREASE INTO THE RECEIVER GROOVE OF THE BYPASS ELIMINATOR MOUNT , FIG. A.
- 2) APPLY BLUE LOCTITE TO THE (2) 5/16 BOLTS, FIG. B AND INSTALL THE PROVIDED 5/16 WASHERS, FIG. C, TO THE MOUNTING BOLTS.
- 3) NEXT MOUNT THE BYPASS ELIMINATOR TO THE ENGINE BLOCK AND TORQUE TO 15-20 FT. LBS..
- 4) NEXT APPLY BLUE LOCTITE TO THE FEMALE THREADS OF THE CONNECTOR NIPPLE, FIG. D AND THREAD ON TO THE PREVIOUSLY INSTALLED BYPASS ADAPTER.
- 5) APPLY GREASE TO THE O-RING AND PLACE IN RECESSED GROOVE IN CAST ALUMINUM OIL ADAPTOR FIG E.
- 6) SLIDE BOTTOM CRUSH WASHER, FIG. F, WITH THE SEAM IN THE WASHER TOWARDS THE STAINLESS STEEL OIL INLET FITTING, FIG. G.
- 7) SLIDE POLISHED STAINLESS STEEL OIL INLET, FIG. G, OVER THE OIL INLET CONNECTING BOLT, FIG. H.
- 8) SLIDE UPPER CRUSH WASHER, FIG J, ON TO THE OIL INLET BOLT. PUT THE SIDE WITH THE SEAM TOWARDS POLISHED STAINLESS STEEL OIL INLET FITTING, FIG. E.
- 9) SLIDE THE OIL INLET MOUNTING BOLT & POLISHED STAINLESS STEEL OIL INLET INTO THE CAST ALUMINUM OIL THERMOSTAT HOUSING.
- 10) APPLY BLUE LOCTITE TO THE THREADS OF THE OIL INLET MOUNTING BOLT, FIG. K.
- 11) TIGHTEN OIL INLET BOLT INTO THE CONNECTOR, FIG. D.
- 12) ROTATE OIL INLET TO POSITION THAT BEST SUITS THE OIL LINE ROUTING. TORQUE TO 35 FT. LBS..
- 13) ALL IN AND OUT PORTS ARE 3/4 NPT. SEE OIL LINE DIRECTION NOTES.

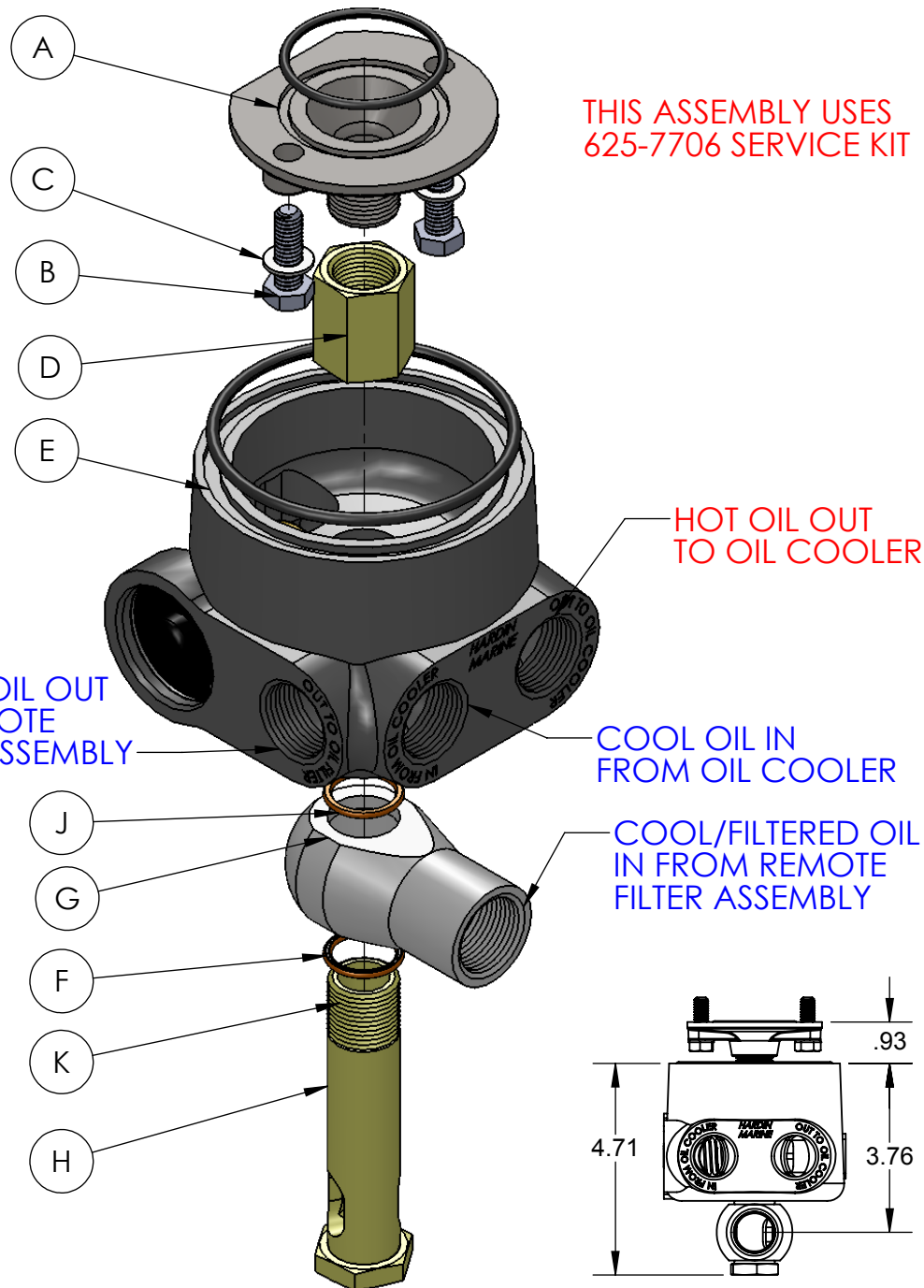
COOL OIL OUT
TO REMOTE
FILTER ASSEMBLY

THIS ASSEMBLY USES
625-7706 SERVICE KIT

HOT OIL OUT
TO OIL COOLER

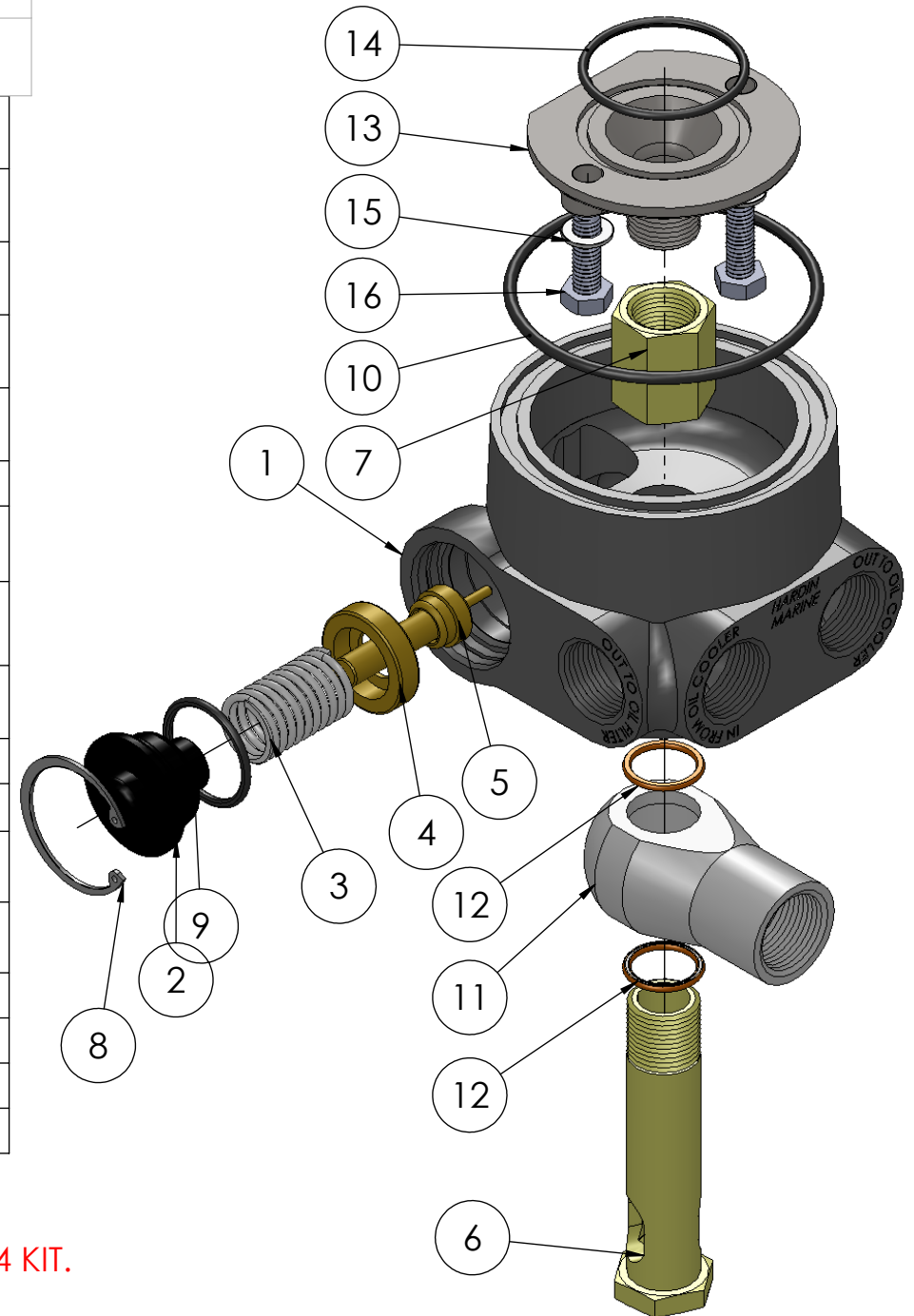
COOL OIL IN
FROM OIL COOLER

COOL/FILTERED OIL
IN FROM REMOTE
FILTER ASSEMBLY



TITLE:
THERMOSTATIC OIL ADAPTER-PARTS BREAKDOWN

ITEM NO.	PART NUMBER	DESCRIPTION	QTY.
1	625-7758	HOUSING, THERMOSTATIC OIL ADAPTER	1
2	625-7759	COVER, THERMOSTATIC OIL ADAPTER	1
3	625-7760	SPRING, THERMOSTATIC OIL ADAPTER	1
4	625-7761	PISTON, THERMOSTATIC OIL ADAPTER	1
5	625-7762	THERMOSTAT, OIL ADAPTER	1
6	625-7763	BOLT, THERMOSTATIC OIL ADAPTER	1
7	625-7764	CONNECTOR, THERMOSTATIC OIL ADAPTER	1
8	625-7765	SNAP RING, THERMOSTATIC OIL ADAPTER	1
9	625-1122	O-RING	1
10	625-1236	O-RING	1
11	625-7766	INLET, THERMOSTATIC OIL ADAPTER	1
12	625-7768	WASHER, CRUSH -THERMOSTATIC OIL ADAPTER - GEN 2	2
13	625-7926	ADAPTER, BYPASS ELIMINATOR	1
14	625-1131	O-RING	1
15	90031AN-STSS	WASHER, 5/16 AN	2
16	90031C100HHS	BOLT, 5/16-18	2



LINES 9,10, 12 & 14 COME IN 625-7706 SERVICE KIT.
LINES 12, 13, 14, 15 & 16 ONLY COME IN 625-7703 GEN 4 KIT.

HARDIN MARINE 11 Industry Dr. Palm Coast, FL 32137
386-445-2500 / FAX 386-445-1122

PART NO.
625-7706

www.hardin-marine.com

TITLE:
SERVICE KIT, THERMOSTATIC OIL ADAPTER

ITEM NO.	PART NUMBER	DESCRIPTION	QTY.
1	625-1122	O-RING	1
2	625-1236	O-RING	1
3	625-7768	WASHER, CRUSH -THERMOSTATIC OIL ADAPTER - GEN 2	2
4	625-1131	O-RING	1

NOTE:
THIS KIT WILL SERVICE BOTH 625-7703 & 625-7704
GENERATION 2 THERMOSTATIC OIL ADAPTER. IF YOU HAVE
GENERATION 1 YOU MUST PURCHASE 625-7766 INLET
ADAPTER SEPARATELY. NO PARTS ARE AVAILABLE FOR
GENERATION 1.
THIS KIT ONLY COMES WITH THE 4 PART NUMBERS LISTED
ABOVE. SEE THE ATTACHED PARTS BREAKDOWN SHEET IF
ANY OTHER PARTS NEED TO BE REPLACED.

