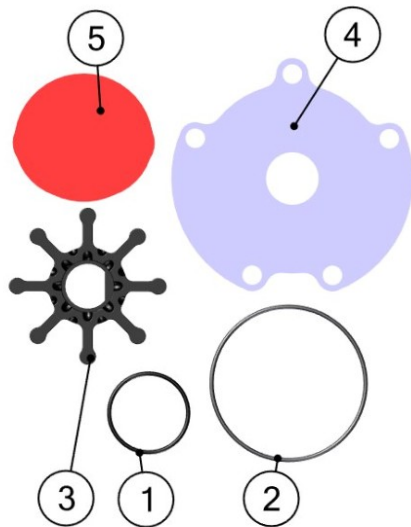


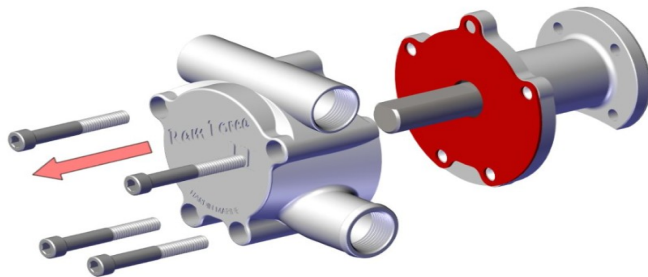


RAM FORCE II STD REBUILD KIT

625-4238

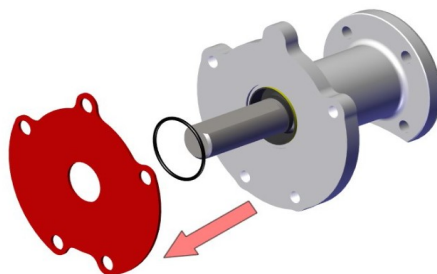


BOM ID	Qty	Name	Description
1	1	625-1026	O-RING
2	1	625-1037	O-RING
3	1	625-4011	IMPELLER, SEA PUMP
4	1	625-4018	WEAR PLATE, SEA PUMP
5	1	625-4265	WEAR PLATE, INTERNAL



Step 1:

- 1) You do not have to remove the sea pump from the engine to replace the impeller.
- 2) Use a 1/4 hex socket to remove the 4 bolts.
- 3) Slide the housing off the shaft.

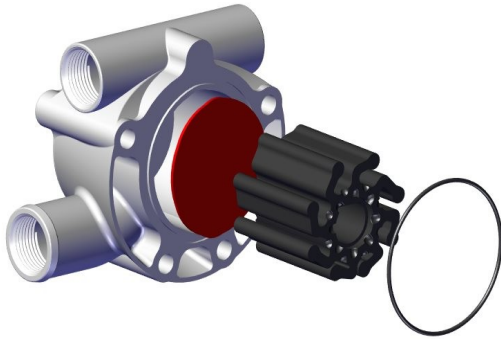


Step 2:

- 1) Remove the wear plate and o-ring.
- 2) Clean the surface.

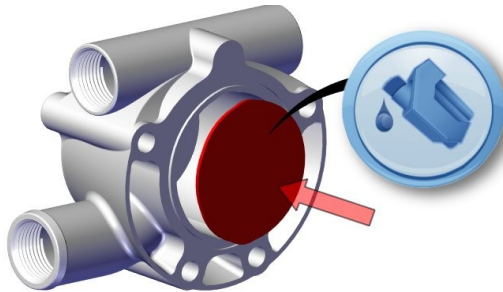


RAM FORCE II STD REBUILD KIT 625-4238



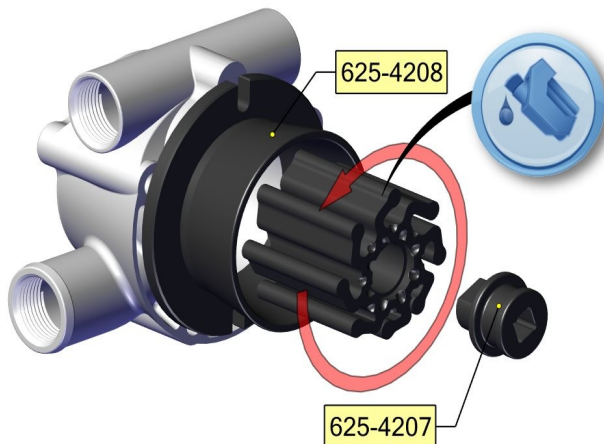
Step 3:

- 1) Remove the o-ring and impeller.
- 2) Use a pick to remove to remove the wear plate if it does not fall out.
- 3) Clean out the body.



Step 4:

- 1) Install wear plate.
- 2) Coat the face with white lithium grease.

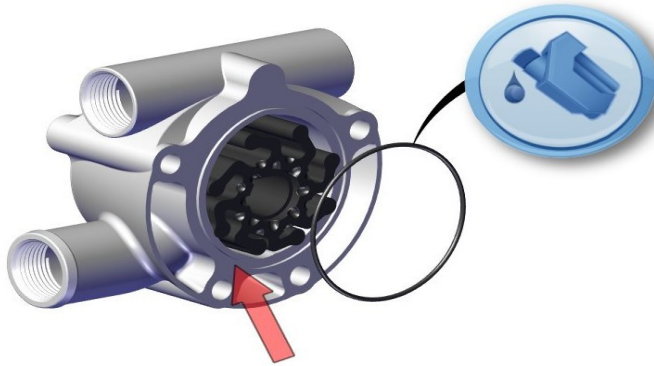


Step 5:

- 1) Coat the impeller housing with white lithium grease.
- 2) Use 625-4209 kit to install impeller.
- 3) Make sure to install the impeller with the blades bent backwards. The impeller turns CCW.

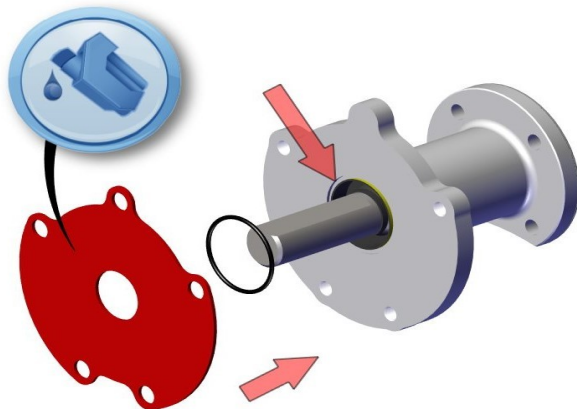


RAM FORCE II STD REBUILD KIT 625-4238



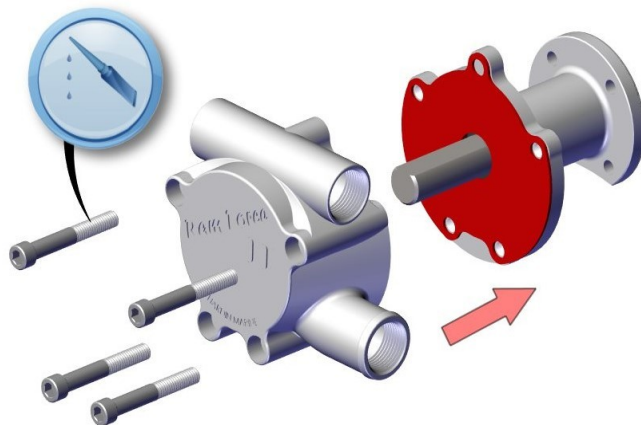
Step 6:

- 1) Apply white lithium grease to the large o-ring and install into the groove.



Step 7:

- 1) Apply white lithium grease to the o-ring and the face of the wear plate.
- 2) Install o-ring into the groove and the wear plate.



Step 8:

- 1) Slide body assembly onto the shaft.
- 2) Apply anti-sieze to the bolts.
- 3) Using 1/4 socket to install the bolts and torque to 20 ft. lbs..