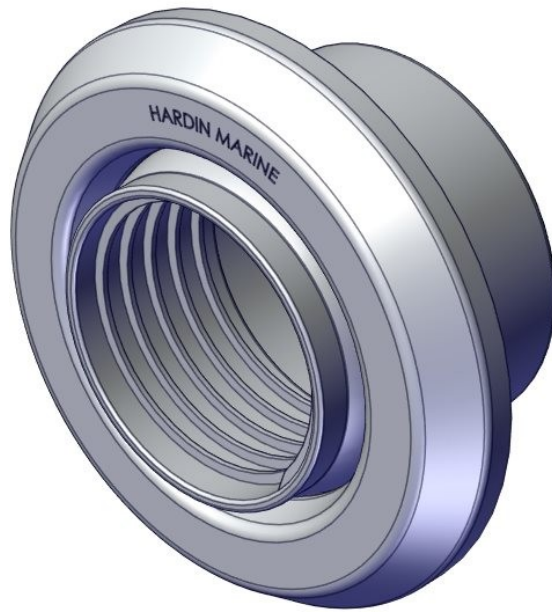




## SWIVEL RIGGING HOSE KIT

755-1000, 755-1001, 755-1002  
& 755-1003



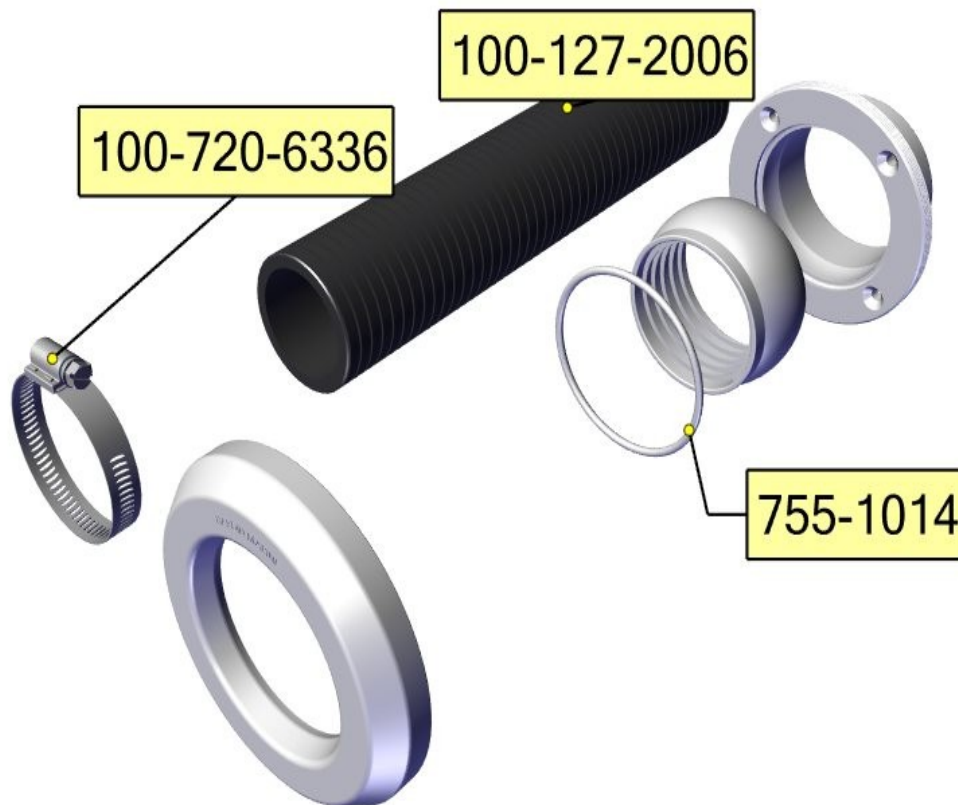
## SWIVEL RIGGING HOSE KIT



## SWIVEL RIGGING THRU HULL

755-1000, 755-1001, 755-1002  
& 755-1003

Components Contained in Kit

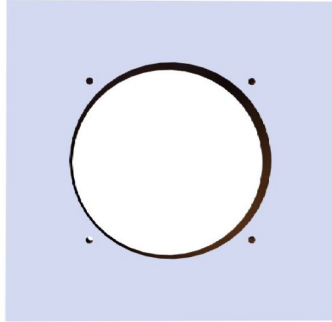


Both 100-720-6336 clamp & 100-127-2006 hose only comes in 755-1002 & 755-1003 hose kits.



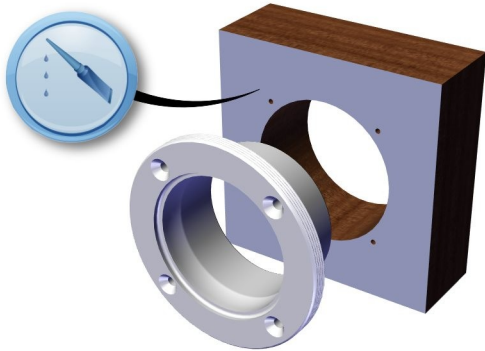
## SWIVEL RIGGING HOSE KIT

755-1000, 755-1001, 755-1002  
& 755-1003



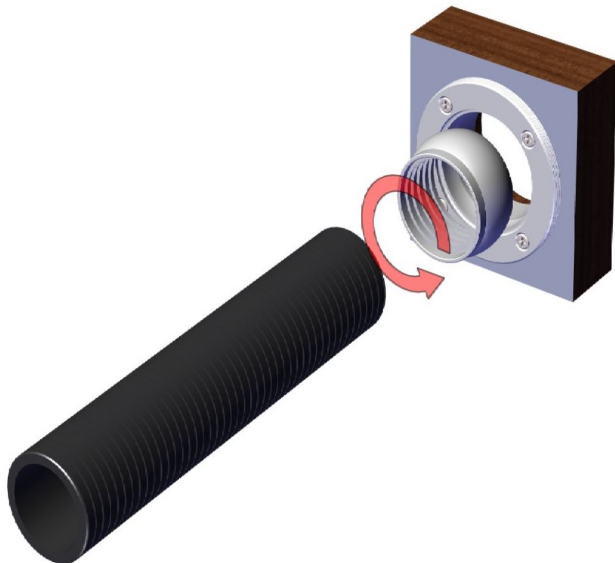
### Step 1

- Use previous page template to position drill the required mounting hose for the base.



### Step 2

- Use 5200 silicone between base and transom.
- Mount to transom using #10 screws, not supplied in the kit.



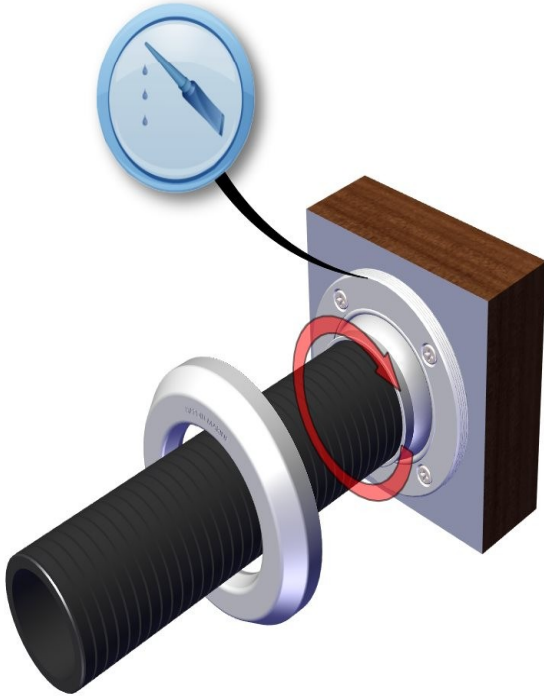
### Step 3

- Turning counter clockwise, install hose into the swivel.
- Install swivel and hose in the base.



## SWIVEL RIGGING HOSE KIT

755-1000, 755-1001, 755-1002  
& 755-1003



### Step 4

- Install o-ring into the base groove.
- Apply 5200 to the outside threads on the base.
- Screw cover onto the base. Tighten till the swivel has a slight drag and the swivel rotates freely.