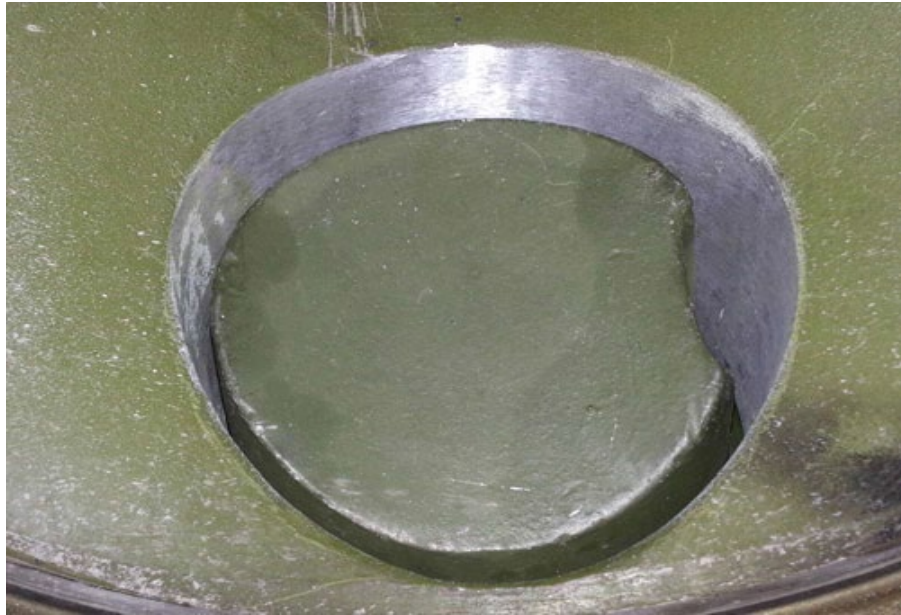




Smooth Flow HP Handhole Cover Installation Instructions
Part # 150-7000



This part is designed to make a tighter fit in the hand hole area over the original stock part (fig1).



Installation is as easy as removing the existing cover and then changing the wrench faster from the old cover to the new cover (fig2).



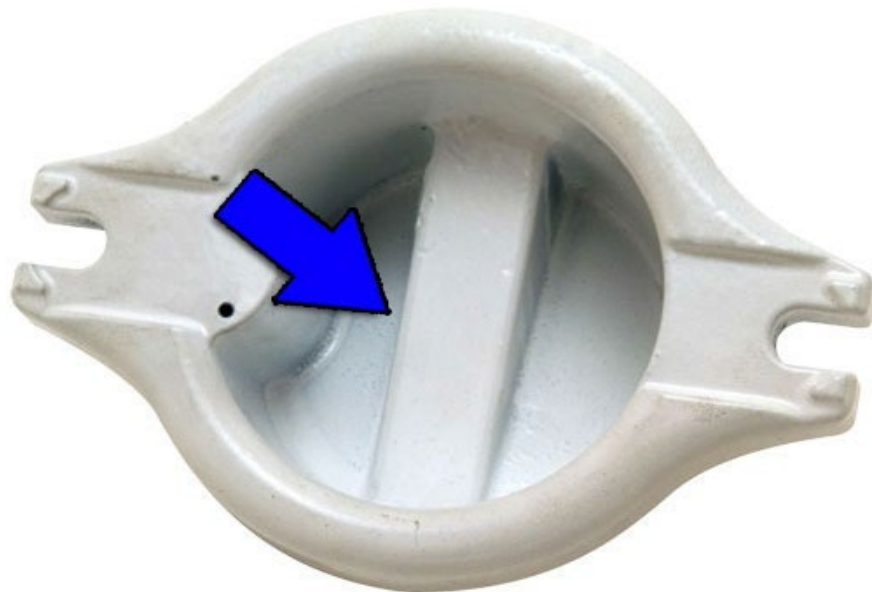
Install the o-ring on the 150-7000 cover and drop it down in the hole (fig3).



Due to some variations in castings you may have to match the cover to the radius of your pump. This can be done by grinding the cover to match the the pump radius, this will give you a nice clean flow of water(fig4).



Once the cover fits to your liking tighten the fasteners that retain the cover and install the lock wrench (fig5).



The center strengthening rib down the center can be drilled and tapped if a pressure port is need for a gauge (fig6).