

HARDIN  
MARINE

11 Industry Dr. Palm Coast, FL 32137  
386-445-2500 / FAX 386-445-1122

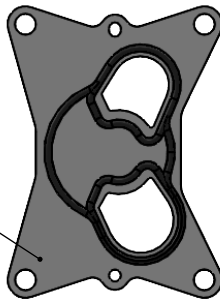
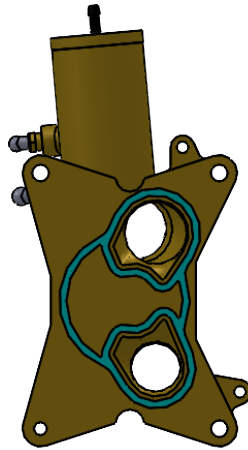
PART NO.

625-4122

TITLE:

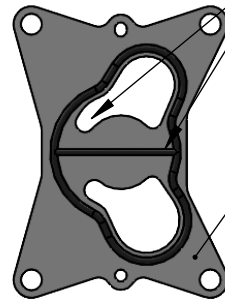
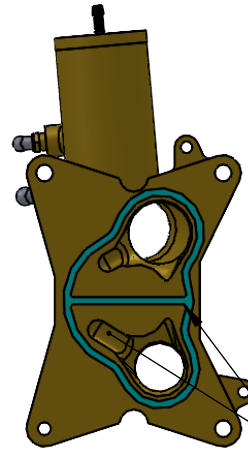
GEN 8 REAR COVER DIFFERENCES

www.hardin-marine.com



REAR COVER SIDE OF WEAR PLATE

625-4306



GEN 2 HAS STRAIGHT SEAL  
GROOVE AND HI-FLOW PORTS

REAR COVER SIDE OF WEAR PLATE

625-4310

MODEL	SERIAL NUMBER
MERCURY 4.5L BRAVO MPI	2A531162 & BELOW
MERCURY 6.2L BRAVO MPI	2A531196 & BELOW
MERCURY 6.2L INBOARD MPI	2A530773 & BELOW
MERCURY 5.2L TOWSPORT MPI	2A531347 & BELOW

MODEL	SERIAL NUMBER
MERCURY 4.5L BRAVO MPI	2A531163 & ABOVE
MERCURY 6.2L BRAVO MPI	2A531197 & ABOVE
MERCURY 6.2L INBOARD MPI	2A530774 & ABOVE
MERCURY 6.2L TOWSPORT MPI	2A531348 & ABOVE

THIS DRAWING IS CONFIDENTIAL AND IS SUPPLIED ON EXPRESS CONDITION THAT IT SHALL NOT BE LENT, COPIED OR DISCLOSED TO ANY OTHER PERSON OR USED FOR ANY OTHER PURPOSE WITHOUT WRITTEN CONSENT OF HARDIN MARINE INC.. BREACH OF THIS CONTRACT WILL HOLD ..... AND IT'S PRINCIPALS LIABLE FOR LOSS AND DAMAGES.